

# Ministry of Agriculture

## Epidemiological situation and the measures regarding foot and mouth disease in Hungary



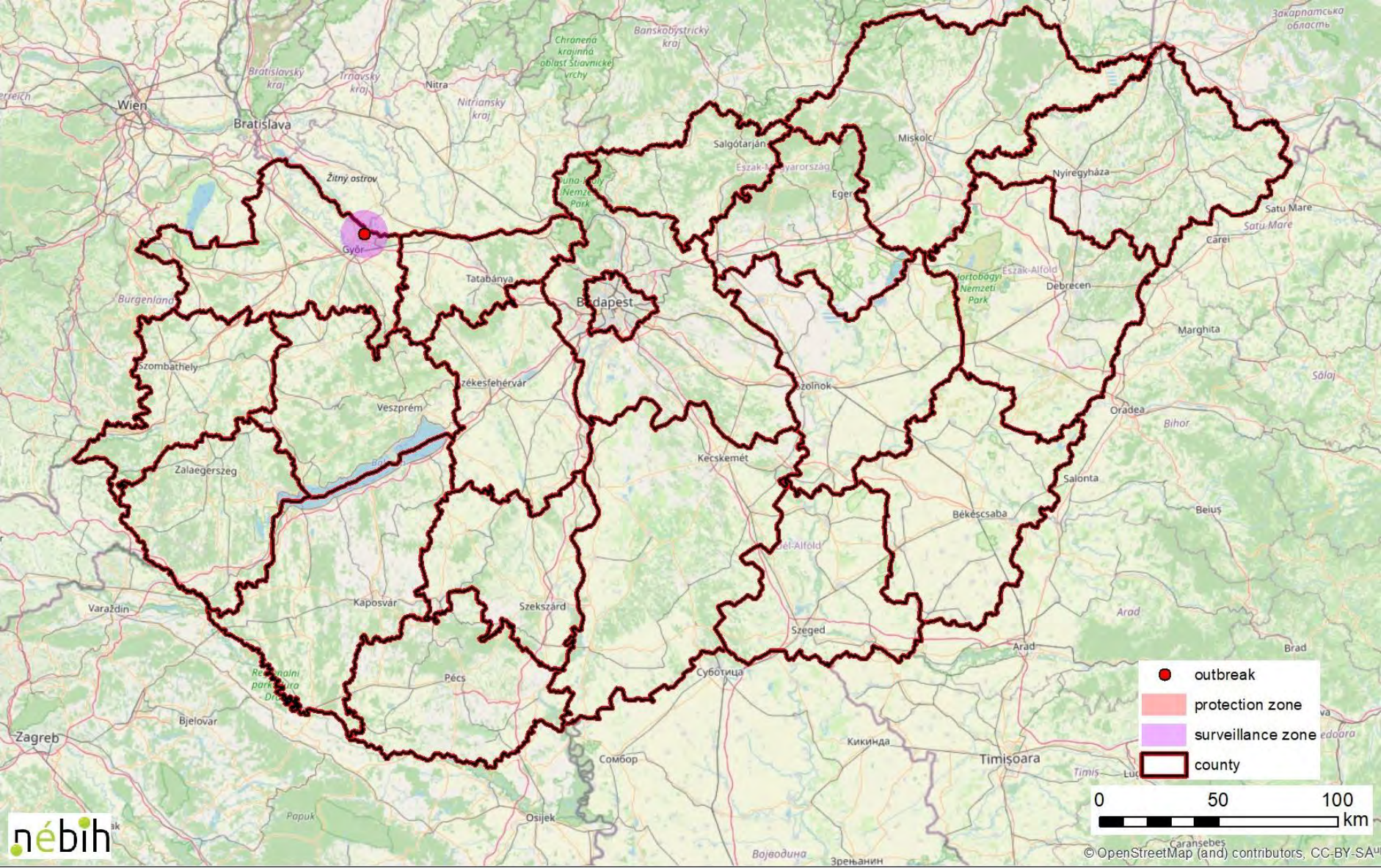
Meeting of the Standing Committee of Plants, Animals Food and Feed  
12.03.2025.



# Summary

1 primary outbreak

	No. of affected animals
Outbreak holding	1408
Contact holding	307
Total	1715







## Outbreak

Dairy cattle farm – 1418 cattle

3<sup>th</sup> March

atypical clinical signs started in a group of heifers:  
loss of appetite and water consumption

4<sup>th</sup> March

same clinical signs, change of mouldy bedding

5<sup>th</sup> March

OV contacted

clinical signs: fever (80%, 39-41°C), vesicles and lesions in the mouth, muzzle, coronary band interdigital space

movement restriction, sampling, epidemiological investigation











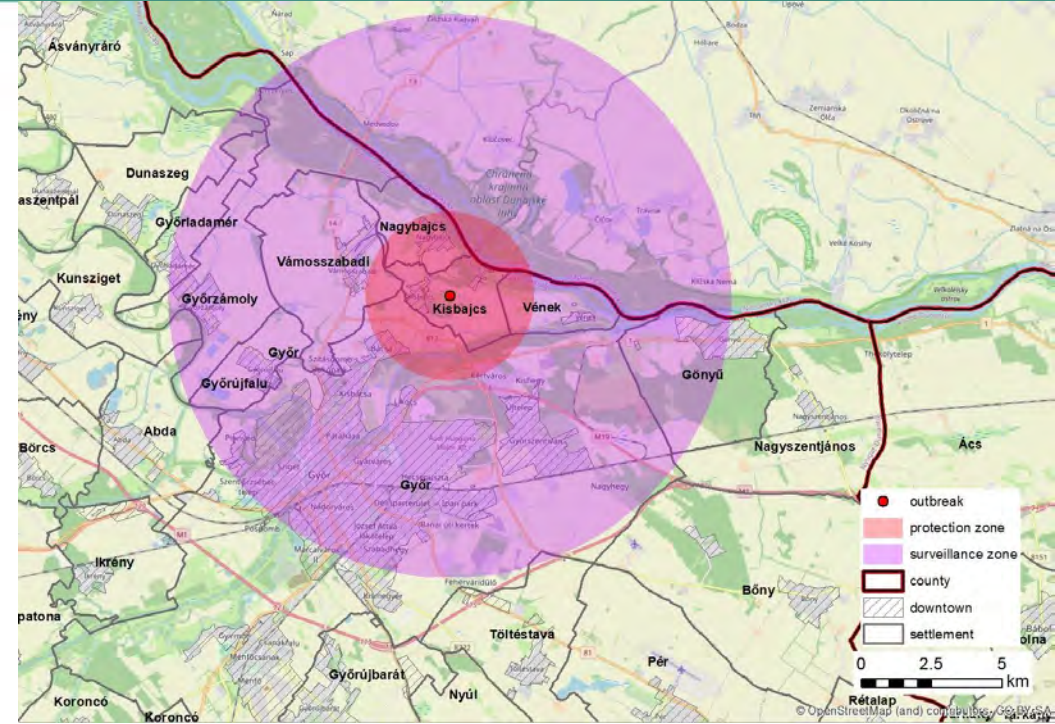
# Outbreak

6<sup>th</sup> March

NRL: PCR positive – confirmation

setting up restricted zones

initial epidemiological investigation:  
one contact holding in the neighbouring  
settlement



**Contact holding:** 300 animals (bulls for fattening, young heifers)

feed was transported daily, movement of animals, same owner



## Stamping out and disposal of carcasses

8<sup>th</sup> March

Killing at the contact holding

9<sup>th</sup> March

Killing at the outbreak holding started

Disposal at a burial site near Bábolna (Komárom-Esztergom county), property of the rendering company approx 30 km away

on-site: water resources

rendering plant: 150 km away



Credit: Kisalföld.hu/Balázs Csapó



## Stamping out and disposal of carcasses



Credit: Róbert Pintér



Credit: MTI



Credit: Telex



## Tracing back and forward

### Live animals:

- contact holding: preventive killing (negative)
- slaughterhouses: 2 (1 finished)
- assembly center: consignment on 27.02

### Milk:

- processing establishments: heat treated

### Personnel:

- some workers from Egypt, one was on holiday in Africa
- veterinarian, inseminator (own)





## Tracing back and forward

### Semen

- From EU registered establishment

### Feed:

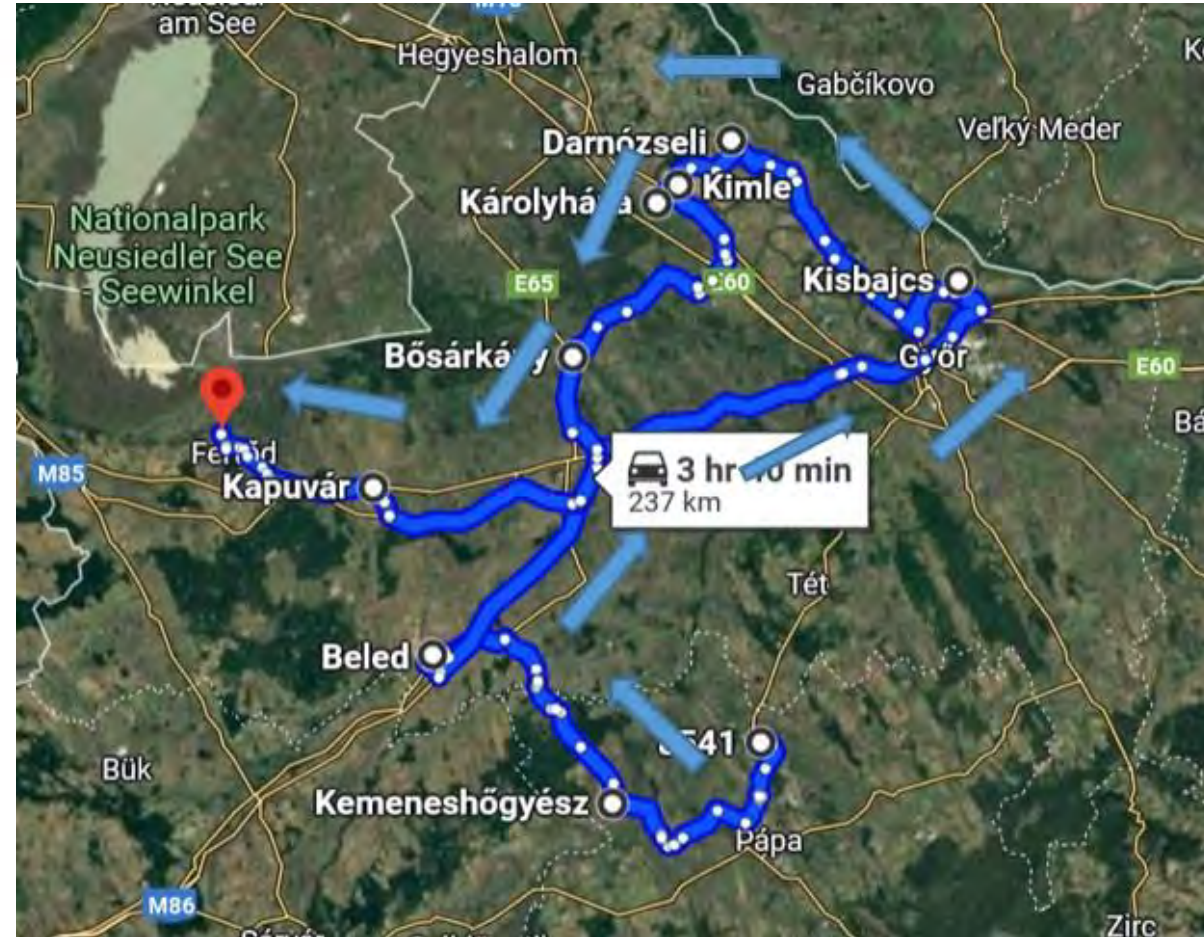
- TMR from approved establishment and silage

### Water:

- tap water, one common source at the heifers

### ABP:

- contact holdings on the route of the trucks
- drivers







## Additional measures

- Movement restriction of all susceptible animals in the area of Transdanubia (territory of Hungary west to the Danube) and the whole territory of Pest county for 72 hours (9<sup>th</sup> March). After that, only direct transport for slaughter is allowed till 17<sup>th</sup> March.
- All outbound international movement of susceptible animals is suspended until further notice.
- Hunting is prohibited within the restriction zones. In the affected county (Győr-Moson-Sopron), blood samples of hunted susceptible animals (roe deer, red deer, fallow deer and wild boar) must be taken for virological examinations
- No exhibitions or other gatherings of susceptible animals can be organised till 17<sup>th</sup> of March in the affected county (Győr-Moson-Sopron).
- Touristic places (eg. zoos, wild game parks) keeping susceptible animals must be kept closed till further notice.



## Additional measures – modified on 9<sup>th</sup> March

- Movement restriction of all susceptible animals in Győr-Moson-Sopron and Komárom-Esztergom counties has been prolonged with further 72 hours, till 12<sup>th</sup> March.
- Movement restriction of cattle in other counties of Transdanubia (territory of Hungary west to the Danube) and the whole territory of Pest county has been prolonged with another 72 hours, till 12<sup>th</sup> March. Movement of other susceptible animals for direct slaughter is allowed, but movement for other reasons is prohibited till 17<sup>th</sup> March.
- All other measures ordered remain in place



Credit: Zoo Győr - facebook



Credit: Budapest ZOO - facebook





## Laboratory analysis of the virus

The Hungarian National Reference Laboratory has identified the serotype of the virus:

### **O serotype**

Its sequence shows the highest similarity with a strain isolated in Pakistan in 2017-18 (98-99%).

The subtype of the strains is FMDV/O/ME-SA/Pan-Asia2/ANT-10.

The full analysis by the European Union Reference Laboratory is ongoing.

## Vaccination

10.000 doses of vaccine from DE



## Sampling (as of 11.03)

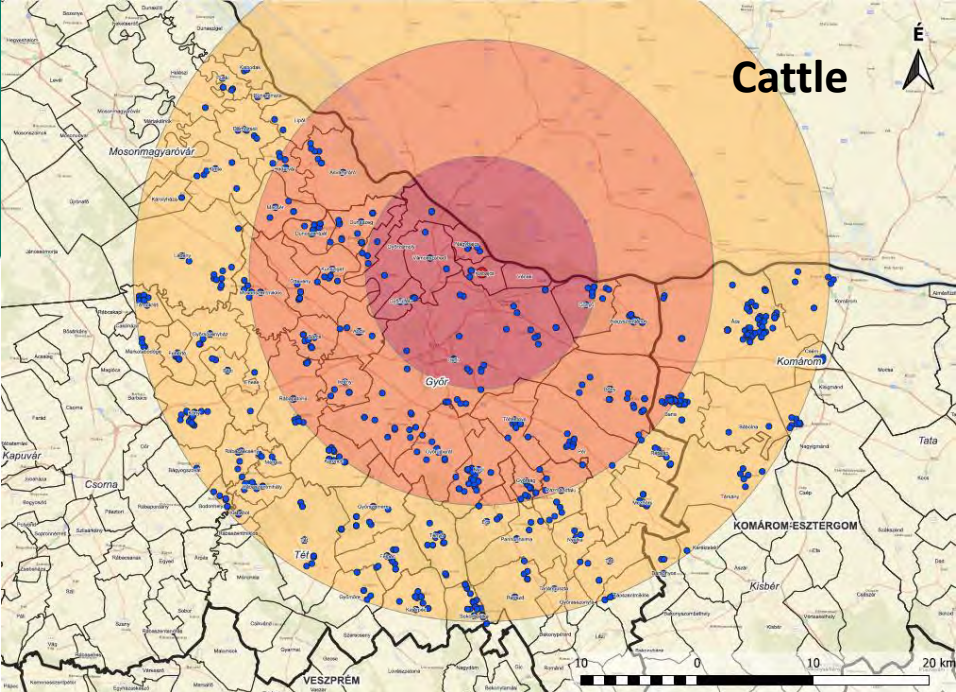
Date	PCR	ELISA
06.03.	25	55
07.03.	4	2
08.03.	252	248
09.03.	1	1
10.03.	115	107
11.03.	358	356
<b>Total</b>	<b>755</b>	<b>769</b>

Contact establishments	No	Sample arrived at laboratory
Via milk tankers	12	5
Drivers of milk tankers	2	0
Via ABP transport	35	1
Workers	2	0
Via transport vehicles – assembly center	4	0
Milkers	2	0
<b>Total</b>	<b>53</b>	<b>6</b>

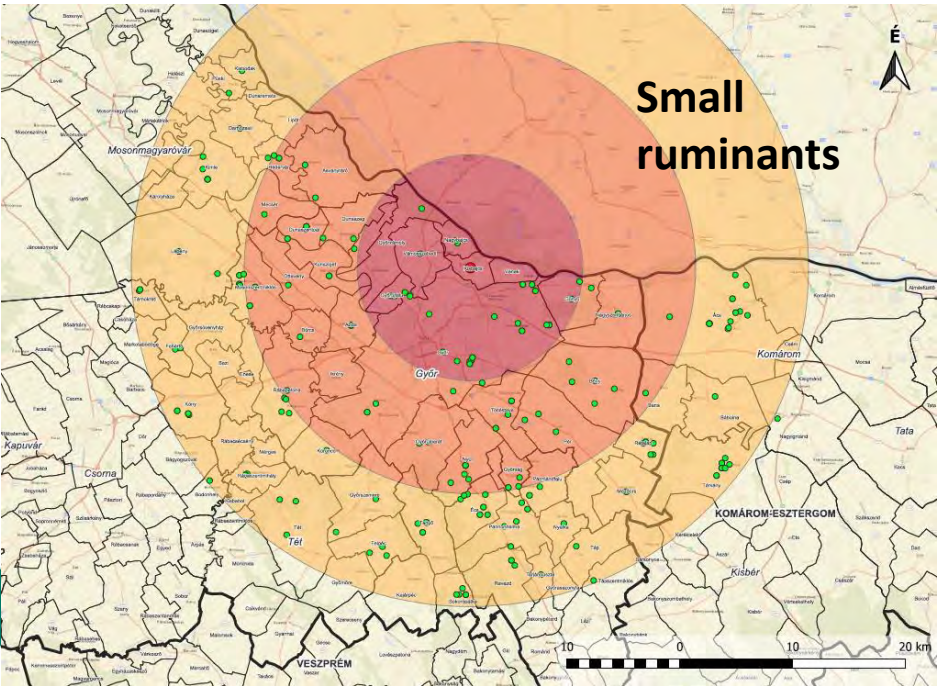
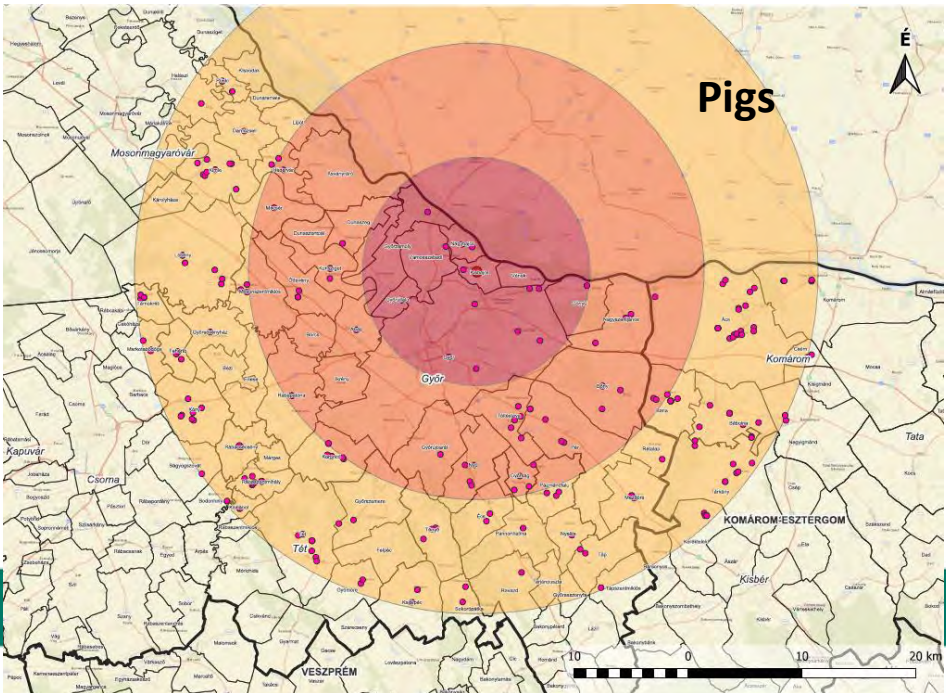


# Ministry of Agriculture-Animal health

10 km zone – 33 keeping places	No. of animals sampled
cattle	102
pig	11
sheep	7
goat	2
Total	122



**Census  
as of 11.03.**



## Information flow

- Crisis management team
- NDCC - LDCC

## Awareness

- National and local media
- Information to relevant stakeholders, producers' and farmers' organisations
- General public



Press conference on 7<sup>th</sup> March  
Credit: Csaba Pelsőczy



Awareness

- Thematic websites: restrictions, measures, maps, FAQ...



Nébih - Nemzeti Élelmiszerlánc-biztonsági Hivatal

★ Kedvencek · 4 n. ·

...

Ragadós száj- és körömfájás (RSzKF) vírust azonosított a [Nébih - Nemzeti Élelmiszerlánc-biztonsági Hivatal](#) laboratóriuma egy kisbajcsi szarvasmarhatartó telepen.!!

Az országos főállatorvos azonnali hatósági intézkedéseket rendelt el a súlyos gazdasági kárral járó betegség elterjedésének megakadályozása érdekében.

⛔Az intézkedés értelmében életbe lép az élőállat fajok és termékeik szállításának tilalma. !

A rendkívül ragályos betegség több, mint 50 év után jelent meg újra Magyarországon.

További információk a <https://portal.nebih.gov.hu/.../megjelent-a-ragados-szaj...> oldalon.




KÖZLEMÉNY


Megjelent a ragadós száj- és körömfájás betegség Magyarországon


HIVATAL · AKTUÁLIS · ÁLLAT · ÉLELMISZER · NÖVÉNY · ÁTFOGÓ TÉMÁK · KAPCSOLAT ·

Q

RF



KÖRZETTERKÉP  
ORSZÁGOS

KÖRZETTERKÉP  
GY-M-S VÁRMEGYE

Ragadós száj- és körömfájás - érintett települések

Frissítve: 2025.03.07.

Általános keresés: 

Q

VISSZA

Vármegye 

Q

Település 

Q

Körzet 

Q

Vármegye	Település	Körzet
Győr-Moson-Sopron	Győr	védőkörzet
Győr-Moson-Sopron	Kisbajcs	védőkörzet
Győr-Moson-Sopron	Nagybajcs	védőkörzet
Győr-Moson-Sopron	Vámosszabadi	védőkörzet
Győr-Moson-Sopron	Vének	védőkörzet
Győr-Moson-Sopron	Abda	felügyeleti (megfigyelési) körzet
Győr-Moson-Sopron	Ásványráró	felügyeleti (megfigyelési) körzet
Győr-Moson-Sopron	Dunaszeg	felügyeleti (megfigyelési) körzet
Győr-Moson-Sopron	Gönyű	felügyeleti (megfigyelési) körzet
Győr-Moson-Sopron	Győr	felügyeleti (megfigyelési) körzet

Előző

1 2

Következő

Thank you for your attention!

